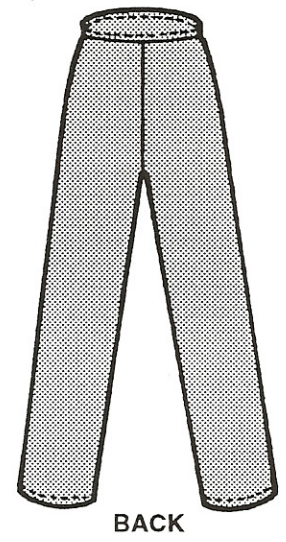
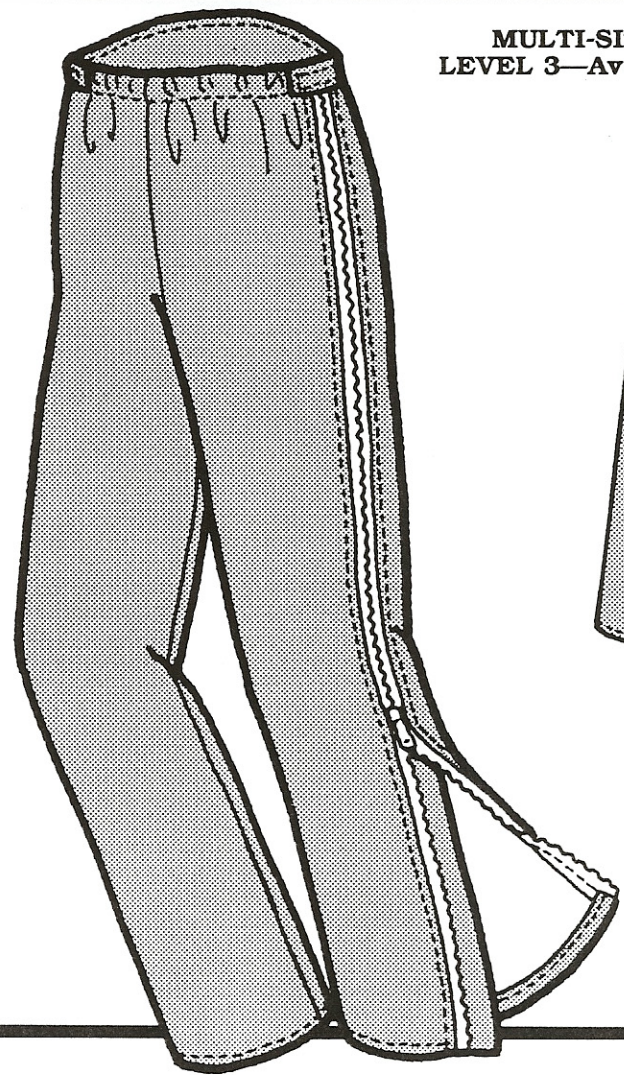


# MEN'S CASCADE POWDER PANTS

**MULTI-SIZED PATTERN  
LEVEL 3—Average Sewing Skill**



**MEASUREMENTS:**

**IMPORTANT:** When selecting pattern size, take measurements over clothing that will be worn under finished garment.

SIZE	28	30	32	34	36	38	40	42
Waist .....	28" (71 cm)	30" (76 cm)	32" (81 cm)	34" (86 cm)	36" (91.5 cm)	38" (96.5 cm)	40" (101.5 cm)	42" (106.5 cm)
Hip .....	34" (86 cm)	36" (91.5 cm)	38" (96.5 cm)	40" (101.5 cm)	42" (106.5 cm)	44" (112 cm)	46" (117 cm)	49" (124 cm)
Inseam .....	31 1/2" (80 cm)	31 1/2" (80 cm)	31 1/2" (80 cm)	31 1/2" (80 cm)	31 1/2" (80 cm)	31 1/2" (80 cm)	31 1/2" (80 cm)	31 1/2" (80 cm)

**FABRIC:**

Size—	28-34	36-42
Fabric .....	60" (150 cm) 1 7/8 yd (1.7 m)	2 1/2 yd (2.3 m)
.....	45" (115 cm) 2 3/4 yd (2.5 m)	2 7/8 yd (2.6 m)
Needlepunch	45" (115 cm) 1/8 yd (.12 m)	1/8 yd (.12 m)

**NOTIONS:**

- 2 ..... 40" (102 cm) Two-way Separating Zippers
- 3/4 yd (.69 m) ..... 1" (2.5 cm) Elastic
- 1/4 yd (.23 m) ..... 3/4" (2 cm) Velcro
- 1 ..... All-Polyester Thread

**SUGGESTED FABRICS:**

Tightly-woven Lightweight Waterproof, Waterproof Breathable, or Water-Repellent Fabric.