

3675

CHARLIE

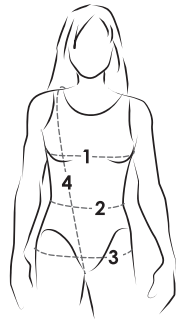
27 tailles
sizes

Blouson aviateur / Bomber Jacket

Blouson pour tissu légèrement extensible / tricot stable avec fermeture à glissière au devant. Col, poignets et bande de taille en bande côtelée. Poche avec passepoil simple et couture d'épaule décalée vers l'avant.

Bomber jacket for stable knits or stretch woven with zipper at front. Ribbing collar, cuffs and waistband. Pocket with single welt made of pocket fabric and forward shoulder seam.

FILLES - GIRLS

| | | | | | | | | | | | | | | |
|--|---|----|----|--------|--------|--------|--------|--------|-----|--------|--------|--------|--------|--------|
|  | Âge approximatif - Approximate age | 2 | 3 | 4 | 5 | 6 | 7 | 8 | 9 | 10 | 11 | 12 | 13 | |
| | Tailles européennes - European sizes | 92 | 98 | 104 | 112 | 119 | 127 | 135 | 142 | 146 | 150 | 152 | 155 | |
| | TAILLE JALIE - JALIE SIZES | F | G | H | I | J | K | L | M | N | O | P | Q | |
| | TABLEAU DE MESURES - MEASUREMENT CHART | | | | | | | | | | | | | |
| 1 | Tour de poitrine - Full Bust | " | 21 | 22 | 23 | 24 | 25 | 26 | 27 | 28 | 29 | 30 | 31 | 32 |
| | | cm | 53 | 56 | 58 | 61 | 64 | 66 | 69 | 71 | 74 | 76 | 79 | 81 |
| 2 | Tour de taille - Waist | " | 20 | 20 1/2 | 21 | 21 1/2 | 22 | 22 1/2 | 23 | 23 3/4 | 24 1/2 | 25 1/4 | 25 3/4 | 26 1/2 |
| | | cm | 51 | 52 | 53 | 55 | 56 | 57 | 58 | 60 | 62 | 64 | 66 | 67 |
| 3 | Tour des hanches - Hips | " | 22 | 23 | 24 | 25 | 26 | 27 | 28 | 29 1/2 | 30 1/2 | 32 | 33 | 34 1/2 |
| | | cm | 56 | 58 | 61 | 64 | 66 | 69 | 71 | 74 | 78 | 81 | 84 | 87 |
| 4 | Tronc (devant + dos) | " | 35 | 37 | 38 1/2 | 40 | 41 1/2 | 43 1/4 | 45 | 47 | 49 | 51 | 53 | 55 |
| | Girth (back + front) | cm | 89 | 94 | 98 | 102 | 105 | 110 | 114 | 119 | 124 | 130 | 135 | 140 |

| Tissus recommandés Suggested Fabrics | Modèle - View | Largeur Width | Quantité de tissu requise - Yardage | | | | | | | | | | | | | |
|---|---------------------------------------|------------------|-------------------------------------|------|------|------|------|------|------|-------|-------|-------|-------|-------|-------|-------|
| | | | yd | m | 5/8 | 3/4 | 3/4 | 3/4 | 7/8 | 7/8 | 1 1/8 | 1 1/4 | 1 1/4 | 1 1/4 | 1 3/8 | 1 3/8 |
| Tissu avec un peu d'extensibilité dans la largeur avec une belle tombée (tricots stables, étoffe tissée ou cuirette extensibles). Medium-weight stable knit or woven with some stretch across the width and a nice drape (double knit, ponte, stretch pleather, scuba knit). | Uni One-color | 59" 150 cm | yd | 5/8 | 3/4 | 3/4 | 3/4 | 7/8 | 7/8 | 1 1/8 | 1 1/4 | 1 1/4 | 1 1/4 | 1 3/8 | 1 3/8 | |
| | | | m | 0.60 | 0.65 | 0.65 | 0.70 | 0.75 | 0.80 | 1.00 | 1.10 | 1.15 | 1.20 | 1.25 | 1.30 | |
| | Dos + Devant Front + Back | | yd | 1/2 | 1/2 | 5/8 | 5/8 | 5/8 | 5/8 | 3/4 | 3/4 | 3/4 | 3/4 | 3/4 | 3/4 | 7/8 |
| | | | m | 0.50 | 0.50 | 0.55 | 0.55 | 0.60 | 0.60 | 0.65 | 0.65 | 0.70 | 0.70 | 0.70 | 0.70 | 0.75 |
| | Manches + Poches Sleeves + Pockets | yd | 1/2 | 1/2 | 1/2 | 1/2 | 5/8 | 5/8 | 5/8 | 5/8 | 5/8 | 3/4 | 3/4 | 7/8 | | |
| | | m | 0.45 | 0.45 | 0.50 | 0.50 | 0.55 | 0.55 | 0.60 | 0.60 | 0.60 | 0.65 | 0.65 | 0.75 | | |
| | Bande côtelée Ribbing | yd | 1/4 | 1/4 | 1/4 | 1/4 | 1/4 | 1/4 | 1/4 | 1/4 | 1/4 | 1/4 | 1/4 | 1/4 | | |
| | | m | 0.20 | 0.20 | 0.20 | 0.20 | 0.20 | 0.20 | 0.20 | 0.20 | 0.20 | 0.20 | 0.20 | 0.20 | | |

FEMMES - WOMEN

| | | | | | | | | | | | | | | | |
|--------------------------------------|----|----|----|----|----|----|----|----|----|----|----|----|----|----|----|
| Tailles USA - US Sizes | 4 | 6 | 7 | 8 | 9 | 10 | 11 | 12 | 13 | 14 | 15 | 16 | 18 | 20 | 22 |
| Tailles européennes - European Sizes | 34 | 36 | 37 | 38 | 39 | 40 | 41 | 42 | 43 | 44 | 45 | 46 | 48 | 50 | 52 |
| TAILLE JALIE - JALIE SIZES | R | S | T | U | V | W | X | Y | Z | AA | BB | CC | DD | EE | FF |

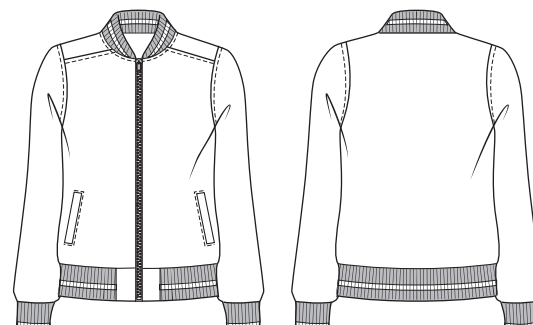
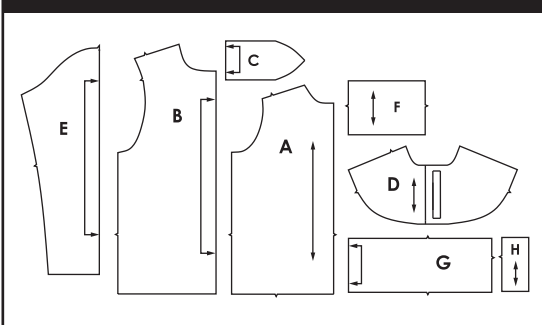
TABLEAU DE MESURES - MEASUREMENT CHART

| | | | | | | | | | | | | | | | | | |
|----------|-------------------------------------|----|-----|-----|-----|-----|--------|-----|--------|--------|--------|-----|--------|--------|-----|--------|-----|
| 1 | Tour de poitrine - Full Bust | " | 33 | 34 | 35 | 36 | 37 | 38 | 39 | 40 | 41 | 42 | 43 | 44 | 46 | 48 | 50 |
| | | cm | 84 | 86 | 89 | 91 | 94 | 97 | 99 | 102 | 104 | 107 | 109 | 112 | 117 | 122 | 127 |
| 2 | Tour de taille - Waist | " | 27 | 28 | 29 | 30 | 31 | 32 | 33 | 34 | 35 | 36 | 37 | 38 | 40 | 42 | 44 |
| | | cm | 69 | 71 | 74 | 76 | 79 | 81 | 84 | 86 | 89 | 91 | 94 | 97 | 102 | 107 | 112 |
| 3 | Tour des hanches - Hips | " | 36 | 37 | 38 | 39 | 40 | 41 | 42 | 43 | 44 | 45 | 46 | 47 | 49 | 51 | 53 |
| | | cm | 91 | 94 | 97 | 99 | 102 | 104 | 107 | 109 | 112 | 114 | 117 | 119 | 124 | 130 | 135 |
| 4 | Tronc (devant + dos) | " | 57 | 59 | 60 | 61 | 61 3/4 | 63 | 63 1/2 | 64 1/2 | 65 1/4 | 66 | 66 1/2 | 66 1/2 | 67 | 67 1/2 | 68 |
| | Girth (back + front) | cm | 145 | 150 | 152 | 155 | 157 | 160 | 161 | 164 | 166 | 168 | 168 | 169 | 170 | 171 | 173 |

| | |
|---|---|
| Tissus recommandés Suggested Fabrics | Tissu avec un peu d'extensibilité dans la largeur avec une belle tombée (tricots stables, étoffe tissée extensible, cuirette extensible). Medium-weight knit or woven with some stretch across the width and a nice drape (stable knit, ponte, stretch leather). |
|---|---|

| Modèle - View | Largeur - Width | Quantité de tissu requise - Yardage | | | | | | | | | | | | | | | | |
|---------------------------------------|-----------------|-------------------------------------|-------|-------|-------|-------|-------|-------|-------|-------|-------|-------|-------|-------|-------|-------|-------|------|
| | | yd | m | 1 3/8 | 1 3/8 | 1 1/2 | 1 1/2 | 1 1/2 | 1 1/2 | 1 1/2 | 1 5/8 | 1 5/8 | 1 5/8 | 1 5/8 | 1 5/8 | 1 5/8 | 1 5/8 | |
| Uni One-color | 59" 150 cm | yd | 1 3/8 | 1 3/8 | 1 1/2 | 1 1/2 | 1 1/2 | 1 1/2 | 1 1/2 | 1 5/8 | 1 5/8 | 1 5/8 | 1 5/8 | 1 5/8 | 1 5/8 | 1 5/8 | 1 5/8 | |
| | | m | 1.30 | 1.30 | 1.35 | 1.35 | 1.40 | 1.40 | 1.40 | 1.45 | 1.45 | 1.45 | 1.50 | 1.50 | 1.50 | 1.50 | 1.50 | |
| Dos + Devant Front + Back | | yd | 7/8 | 7/8 | 7/8 | 7/8 | 7/8 | 7/8 | 7/8 | 7/8 | 7/8 | 7/8 | 7/8 | 7/8 | 7/8 | 7/8 | 7/8 | 7/8 |
| | | m | 0.75 | 0.75 | 0.75 | 0.80 | 0.80 | 0.80 | 0.80 | 0.80 | 0.80 | 0.80 | 0.80 | 0.80 | 0.80 | 0.80 | 0.80 | 0.80 |
| Manches + Poches Sleeves + Pockets | yd | 7/8 | 7/8 | 7/8 | 7/8 | 7/8 | 7/8 | 7/8 | 7/8 | 7/8 | 7/8 | 7/8 | 7/8 | 7/8 | 7/8 | 7/8 | 7/8 | |
| | m | 0.75 | 0.80 | 0.80 | 0.80 | 0.80 | 0.85 | 0.85 | 0.85 | 0.85 | 0.85 | 0.85 | 0.85 | 0.85 | 0.85 | 0.85 | 0.85 | |
| Bande côtelée Ribbing | yd | 3/8 | 3/8 | 3/8 | 3/8 | 3/8 | 3/8 | 3/8 | 3/8 | 3/8 | 3/8 | 3/8 | 3/8 | 3/8 | 3/8 | 3/8 | 3/8 | |
| | m | 0.30 | 0.30 | 0.30 | 0.30 | 0.30 | 0.30 | 0.30 | 0.30 | 0.30 | 0.30 | 0.30 | 0.30 | 0.30 | 0.30 | 0.30 | 0.35 | |

PIÈCES DU PATRON - PATTERN PIECES



MERCERIE - NOTIONS

Fermeture à glissière détachable
Detachable zipper

- F-G 30 cm (12")
- H-I 35 cm (14")
- J-K 40 cm (16")
- L-M 45 cm (18")
- N-Q 50 cm (20")
- R-FF 55 cm (22")



6003675

Les ressources de couture et d'ourlet sont intégrées dans le patron.
Seam and hem allowances are included in pattern.

Ce vêtement est cousu à 1 cm (3/8") du bord.
Stitch this garment 1 cm (3/8") from edge.

ÉLASTICITÉ MINIMALE REQUISE DANS LA LARGEUR
STRETCH REQUIRED ACROSS THE WIDTH